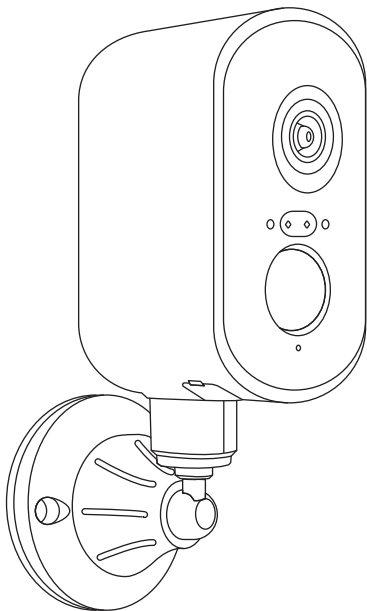


PetTec | Pet Cam Free 4G



LOVE
YOUR **PET**



HERE WE GO...

Thank you for choosing our pet cam. With the **PetTec Pet Cam Free 4G** you'll always have your darling in view.

Important safety instructions

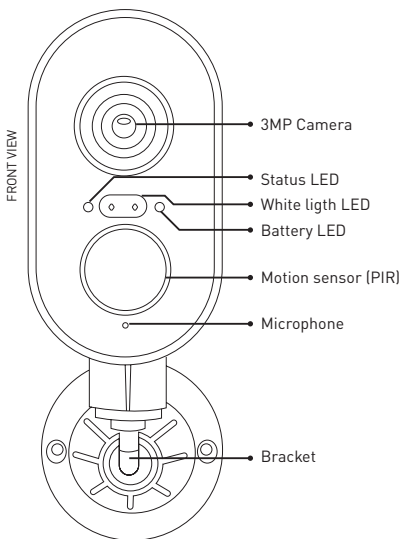
READ ALL INSTRUCTIONS AND WARNINGS IN THIS OPERATING MANUAL BEFORE USING THE PET CAM FREE 4G.

- Please do not disassemble and modify the PetTec Pet Cam Free 4G. The device requires neither maintenance nor servicing. In case of malfunction, please contact our customer service.
- In order to ensure proper use of the device, we recommend that you only use the original parts. Use only the supplied assembly parts for mounting the device.
- Keep the camera away from external exposure to ensure long term use. The device should not be affected by any renovation work, be it the use of paint or wallpaper.

Legal Notice

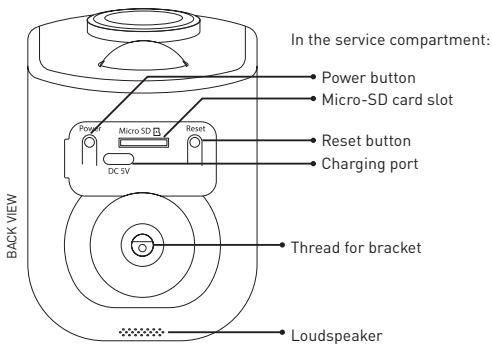
- The PetTec Pet Cam Free 4G has been designed for indoor and outdoor use only. Laws in your country may limit observation of areas outside of your home or property. Please inform yourself about local legislation. To protect the privacy of others, mount the camera so that you cannot record images of public areas, streets, or your neighbor's property. We also recommend informing relatives, visitors and domestic workers about the camera and its function.
- Please note that using the Pet Cam Free 4G does not automatically inform you via the app in emergencies or in the event of break-ins, for example. If necessary, an emergency call must always be made by you. Stage10 GmbH accepts no liability for missing or incorrect notifications or recordings.

PRODUCT OVERVIEW I





PRODUCT OVERVIEW II



CONTENTS



PetCam Free 4G



Bracket



Magnetic disc



Screw set



USB-C cable



These instructions

IMPORTANT INSTRUCTIONS



Status LED display

- Slowly flashing red LED - camera is started and ready to be connected to the app.
 - Red fast flashing LED - 4G connection is being established. Try resetting the camera if the LED flashes quickly for a longer period of time.
-
- Red and blue LED flashing alternately - connection to the app not possible! Please check whether the 4G service is active.
-
- Blue flashing LED - The camera is currently being initialised and connected
 - Rapidly flashing blue LED - firmware is being updated.
 - LED lights up blue - The camera is connected

Switching on and off

Press the power button in the service compartment for three seconds (until the LED lights up red) to switch the appliance on or off.

USB type-C cable

The connector supplies power to the camera. If required, conventional USB type-C cables with different lengths may be used.

Microphone/speaker

The combination of built-in microphone and speaker allows two-way communication.

Micro-SD card slot

The micro-SD card slot is located at the top of the treat tank under a cover (see diagram). Micro-SD cards up to 256 GB may be used.

Reset Button

The reset button must be pressed for approx. 5 seconds to reset the camera to the factory settings.



4G USAGE

The **Pet Cam Free 4G** offers various options to ensure a permanent connection with the app.

Mobile radio 4G

The Pet Cam Free 4G is operated entirely without restrictive WiFi using the 4G mobile network. This is a good option for positioning the camera freely without having to worry about WiFi coverage.

You can easily book a fast 4G service via the PetTec app. If the mobile network coverage at the camera's location is good, you don't have to worry about anything else.

Ready to go with 4G

So that you can start using the camera immediately, we are giving you 3 days of LTE use with the built-in e-Sim. The duration starts to run from the time of commissioning (see there) and connection of the app with the Pet Cam Free 4G.

If you pass the camera on to someone else - and it is connected to a new PetTec user account - the 3 days start again from the beginning. So everyone can immediately test the camera's many functions.

Fair use: This is possible up to 4 times.

GETTING STARTED



1. Please connect the camera with the enclosed charging cable to fully charge the camera before using it for the first time. You are using a CE-certified mains plug from another manufacturer.
2. Switch on the camera by pressing the on/off switch. After approx. 30 seconds, the camera is ready to be connected to the app.
3. Open the app (the QR code for downloading can be found below) and click on the + symbol and then on 'Scan code'.
4. Now scan the QR code on the back of the camera and follow the instructions in the PetTec app.
5. **The camera is permanently connected to the app or your smartphone exclusively via the 4G mobile phone connection of PetTec's chargeable service.**
6. Ensure the wireless quality when setting up the camera! Always check the quality of the wireless connection before permanently installing the camera at a location!

The use of a chargeable 4G service from PetTec is mandatory in order to utilise the camera's full range of functions.

Important: Fully charge the device when using it for the first time or after a longer break. This can take up to 4 hours!





FEATURES

Pan

The camera image can be rotated in the app to obtain a viewing angle of almost 360 degrees.

Colour Vision

Thanks to the two white light LEDs, the recorded images and videos of motion detection are in colour.

Two-way audio

If you see a visitor in the camera's live view, you can speak to them and communicate with them via your app function.

PIR

If someone walks past, an alarm is triggered and sent to your smart-phone.

Motion detection

The camera can be activated from a great distance (up to 15 metres) by detecting people. The camera sends you push notifications and app notifications as soon as human movement is detected.

Recording

Use a micro SD card or save events with the Cloud Event Service Cloud+ so you never miss a thing.

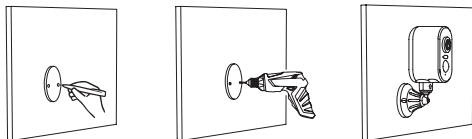
Day&Night

With the powerful night vision technology, you have a good view even in the dark (up to 15 m).

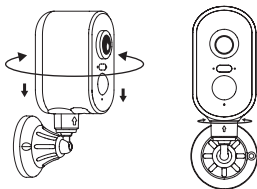
MOUNTING THE CAMERA I



It is very easy to attach the camera mount to a wide variety of surfaces:



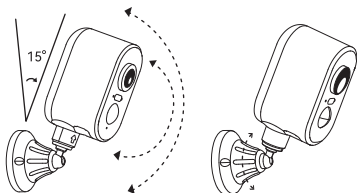
- Use a drill to drill holes for the screws of the bracket. We recommend marking the position of the holes on the surface beforehand.
- First screw the screws into the front holes.
- Then connect the magnetic disc and the screws with the nuts.
- Finally, attach the bracket to the magnetic base.



- Align the screw of the bracket with the thread on the underside of the camera and then turn the bracket until it is firmly tightened.
- Ensure that the angle of rotation of the camera is centred. **Use the arrow markings to do this.**

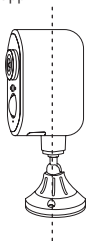


MOUNTING THE CAMERA II



- Set the camera to a suitable angle, we recommend 15° downwards.
- Then turn the base clockwise to fix the angle.

Note: You can also mount the camera upside down. The camera image can be rotated in the app.



- However, you do not have to attach the camera firmly to a surface - it is also possible to stand the camera upright.
- To do this, use the bracket as a base and position the camera vertically on the bracket.
- Place the camera on a flat surface and check that it remains upright without tipping over.

TECHNICAL DETAILS



Requirements	<ul style="list-style-type: none">• PetTec e-Sim service with unlimited monthly data volume (subject to a charge, see PetTec app for prices)
Data storage	<ul style="list-style-type: none">• Supports Micro-SD cards up to 256 GB• Micro-SD cards available separately (Requires class 10 oder higher)
Video	<ul style="list-style-type: none">• Resolution: 3MP 2304x1296 pxl. HD 25fps• Format: H.265• Shutter speed: 1/20-1/10000s• Field of vision: 115°• Field of vision with pan functionFunction: 355°
Alarm triggering	<ul style="list-style-type: none">• Motion detection up to 15 m range by day day
Image sensor	<ul style="list-style-type: none">• Night vision: up to 15 m (also in color)• Digital Wide Dynamic Range - For improving image quality with large differences in brightness• Color 0.1Lux@F2.0• 1/2.8" 3 Megapixel CMOS• Digital-Zoom
Audio	<ul style="list-style-type: none">• Rear loudspeaker• Front microphone
Motion detection	<ul style="list-style-type: none">• Immediate push notifications via PetTec App when motion is detected
Dimensions & weight	<ul style="list-style-type: none">• Dimensions: 192 x 60 x 75mm• Weight: 407g



Integrated rechargeable battery

- Battery capacity: 9,000mAh
- Charging via USB-C cable via USB power adapter
- Charging via solar panel possible

Power supply

- Consumption in stand-by mode: 200-800µA
- Consumption in work mode: 150-200mA
- Maximum power consumption: 4.5W
- Rated power input (USB-C): DC 5V/2A

Outdoor use

- Protection class: IP65 - Weatherproof / protected against water jets
- Temperature range: -20° to +50°

IMPORTANT INFORMATIONS

Requires sufficient 4G LTE radio signal

When installing the camera, it must be ensured that a good 4G network quality is available at the intended location. Therefore, check the connection first and only attach the camera once a good connection has been ensured.

Radio signal

The radio transmission signal may be adversely affected by external influences (e.g., electric motors, defective electrical appliances). The range of the radio transmission signal is usually weaker within buildings than in the open field. Similarly, the structural works/conditions affect the radio range of the device. Bluetooth devices such as headphones or speakers can also negatively affect the radio signal of the device. The signal strength can also be reduced by environmental influences such as humidity.



Environmental protection

Please note that non-disposable electrical and electronic appliances as well as batteries must be recycled separately and in an environmentally friendly manner (European Directive on Waste Electrical and Electronic Equipment). Use the country-specific return and collection systems for the recycling of electrical and electronic appliances as well as for batteries. Disposal of batteries in household waste is prohibited.

TROUBLESHOOTING

My PetCam cannot be displayed correctly in the preview?

Check whether the network quality at the PetCam installation site is good enough. If this is not the case, select a different location.

Why is the device still in the device list after resetting?

When the device is reset, the network configuration is reset. To delete the device from the list, please start the app and delete your device.

Why does the device not recognise the micro SD card?

It is recommended to insert the card while the camera is switched off. Only then switch the camera on again. Check whether the card is recognised in another device and whether it has been formatted in FAT32 format. The micro SD card cannot be recognised if the internet connection is poor.

Why am I not receiving any notifications with the app?

Please make sure that the app is running on the phone and that the corresponding reminder function is activated. Also make sure that the permission to send notifications has been activated for this app in the settings of your smartphone.



CUSTOMER SERVICE

Declaration of conformity

Stage10 GmbH confirms that the product described in these instructions (Pet Cam Free'n 360°) conforms to guideline 2014/53/EU. The complete text of the EU declaration of conformity is available at the following URL:



<https://support.pettec.de/hc/de>



Declaration of conformity (see chapter „Declaration of conformity“): Products designated with this symbol fulfill all applicable community provisions of the European Economic Area.

MANUFACTURER INFORMATION AND SERVICE

If you have questions about the PetTec Free'n 360° or experience problems using it, first contact us via email at the following address:
info@PetTec.de

PetTec® is a brand of
Stage10 GmbH
Oranienburger Str. 45
10117 Berlin
www.PetTec.com

You can find further information about our products, troubleshooting, and helpful tips at:

support.PetTec.de



DISPOSAL



Disposing of packaging



Please sort the packaging before disposal:

- Cardboard and paperboard with paper recycling
- Plastic wrap with recyclables



Disposal of devices

Applicable in the European Union and other European countries with systems for the separate collection of recyclables.

Do not dispose of used devices with household trash!

If your Pet Cam Free'n 360° is no longer usable, each user is obligated by law to dispose of used devices separately from household trash, e.g. at a collection site in your municipality. This ensures that used devices are recycled properly and that negative environmental effects are avoided. Therefore, electronic devices are marked with the symbol shown here.

PetTec | Pet Cam Free 4G

PetTec© ist eine Marke der
Stage10 GmbH
Oranienburger Str. 45
10117 Berlin
Germany



WEBSITE & SHOP

www.PetTec.com

◀ **INFOS, MANUALS & SUPPORT**
support.PetTec.de

Pet Cam Free 4G

Art No. 16367



Für den vollständigen Funktionsumfang der PetCam Free 4G benötigen Sie den **kostenpflichtigen 4G-Service** von PetTec!

4

