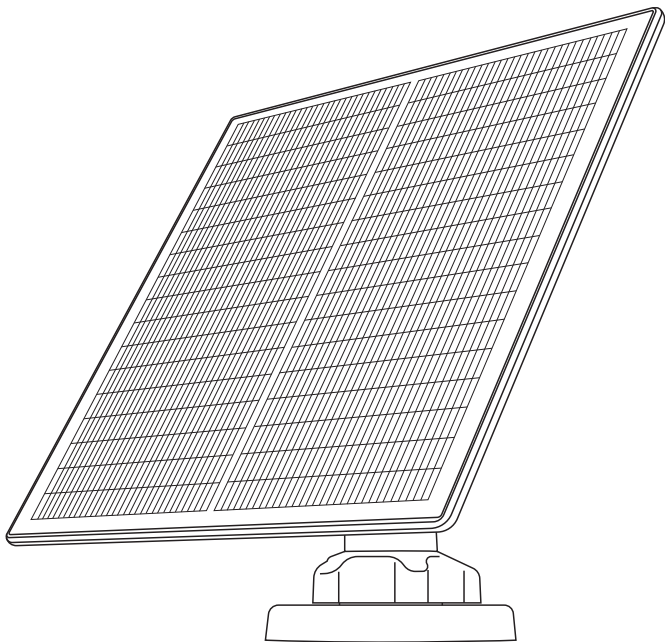


PetTec

Solar Panel

for Wireless Cameras





HERE WE GO...

Thank you for choosing our solar panel. With the **PetTec Solar Panel** you can operate our Pet Cams for outdoor use without having to charge batteries or set up a permanent power supply.

Important safety instructions

READ ALL INSTRUCTIONS AND WARNINGS IN THIS OPERATING MANUAL BEFORE USING THE PETTEC SOLAR PANEL.

- Please do not disassemble and modify the PetTec Solar Panel. The device requires neither maintenance nor servicing. In case of malfunction, please contact our customer service.
- In order to ensure proper use of the device, we recommend that you only use the original parts. Use only the supplied assembly parts for mounting the device.
- Keep the device away from external exposure to ensure long term use. The device should not be affected by any renovation work, be it the use of paint or wallpaper.

Instructions for use

Wipe the surface of the solar panel regularly with a soft, damp cloth to remove dust and dirt.

Make sure to update the firmware version of the camera to the latest version.

PACKAGE CONTENTS



You will find these parts in the pack:



Solar panel with
cable



Universal joint



Socket Nut



Locking Screw Cap



Base



4 Screws

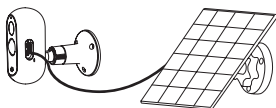


3 Wall Anchors

USING THE SOLAR PANEL

Connect the solar panel to the PetTec PetCam outdoors using the USB Type-C cable. When the sun is shining, the solar panel produces electricity to power the PetCam.

You will find details on the installation and optimum positioning of the solar panel later in the instructions.

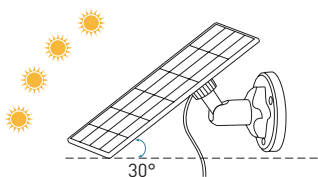




SELECTION OF THE LOCATION

If possible, choose a location for your solar panel that is permanently sunny all year round and faces south. It only takes a few hours of direct sunlight per day to charge your camera.

The amount of electricity produced depends on weather conditions, the change of seasons and local conditions. However, it is usually not difficult to find a good place for the solar panel.



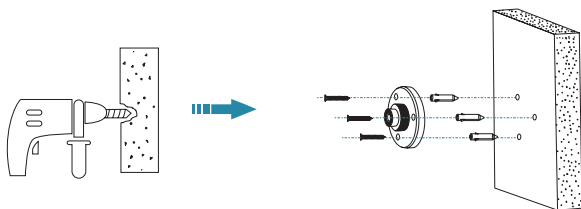
Tilt the solar panel upwards by approx. 30° to optimise the electricity yield.

MOUNTING THE SOLAR PANEL

Step 1: Attaching the base

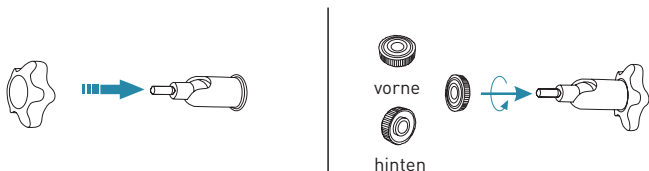
Attach the base to your chosen location using the screws supplied.

We recommend using a drill with a 6.0 mm drill bit to drill the holes and then inserting the wall plugs supplied. You can then fix the plinth in place using the screws supplied.



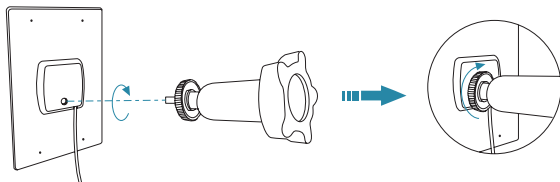
Step 2: Fitting the universal joint

First place the locking cap on the universal joint and then screw the socket nut into the universal joint.



Step 3: Fastening the joint to the solar panel

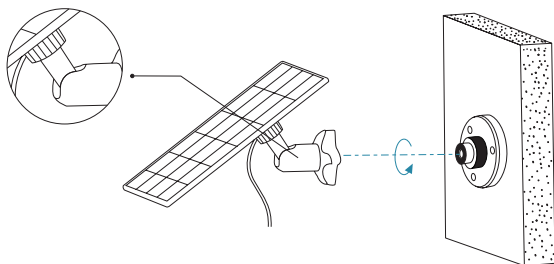
Screw the universal joint to the back of the solar panel. Tighten it firmly using the nut provided.





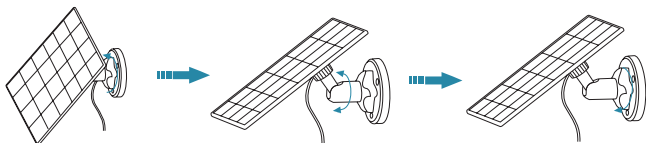
Step 4: Attaching the solar panel

Screw the locking cap into the base. Ensure that the universal joint is angled upwards.

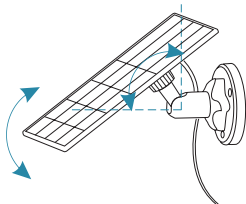


Step 5: Setting up the solar panel

If you want to adjust the solar panel to the left or right, loosen the locking cap, turn the sleeve rod and tighten the cap again when the panel is in the correct position.



The angle of the solar panel can be adjusted up and down by up to 90°.



TECHNICAL DETAILS



Max. power	≥ 4.4 W
Max. Vmp/Imp	4.4 V / ≥ 1.0 A
Operating temperature	-20° - +50° C
Cable length	2.9 m
Dimensions	174 x 163 x 12.5 mm
Weight	288 g

IMPORTANT NOTES

Environmental protection

Please note that non-disposable electrical and electronic appliances as well as batteries must be recycled separately and in an environmentally friendly manner (European Directive on Waste Electrical and Electronic Equipment). Use the country-specific return and collection systems for the recycling of electrical and electronic appliances as well as for batteries. Disposal of batteries in household waste is prohibited.



CUSTOMER SERVICE

Declaration of conformity

Stage10 GmbH confirms that the product described in these instructions (Pet-Tec Solar Panel) conforms to guideline 2014/53/EU. The complete text of the EU declaration of conformity is available at the following URL:



<https://support.pettec.de/hc/de>



Declaration of conformity (see chapter „Declaration of conformity“): Products designated with this symbol fulfill all applicable community provisions of the European Economic Area.

MANUFACTURER INFORMATION AND SERVICE

If you have questions about the PetTec Solar Panel or experience problems using it, first contact us via email at the following address:
info@PetTec.de

PetTec® is a brand of
Stage10 GmbH
Leipziger Platz 910117 Berlin
www.PetTec.com

You can find further information about our products, troubleshooting, and helpful tips at:

support.PetTec.de



DISPOSAL



Disposing of packaging

Please sort the packaging before disposal:

- Cardboard and paperboard with paper recycling
- Plastic wrap with recyclables



Disposal of devices

Applicable in the European Union and other European countries with systems for the separate collection of recyclables.

Do not dispose of used devices with household trash!

If your PetTec Solar Panel is no longer usable, each user is obligated by law to dispose of used devices separately from household trash, e.g. at a collection site in your municipality. This ensures that used devices are recycled properly and that negative environmental effects are avoided. Therefore, electronic devices are marked with the symbol shown here.

PetTec

Solar Panel

for Wireless Cameras



PetTec© ist eine Marke der
Stage10 GmbH

Leipziger Platz 9
10117 Berlin
Germany

WEBSITE & SHOP
www.PetTec.com

INFOS, MANUALS & SUPPORT
support.PetTec.de

Solar Panel black
for Wireless Cameras

Art No. 16297



Solar Panel white
for Wireless Cameras

Art No. 16294

